

# TAI01A Cycling Tights

Blaze Style, with Short Zippers

CUSTOMER: \_\_\_\_\_

VERSION: 1

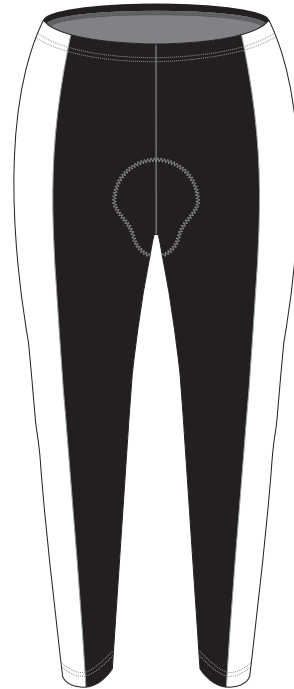
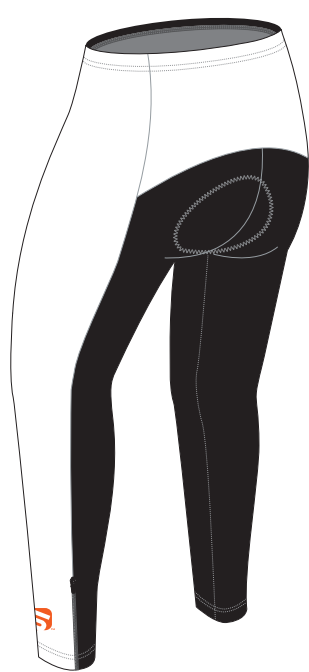
DESIGN REQUEST NUMBER: \_\_\_\_\_

DATE: 00 / 00 / 2014

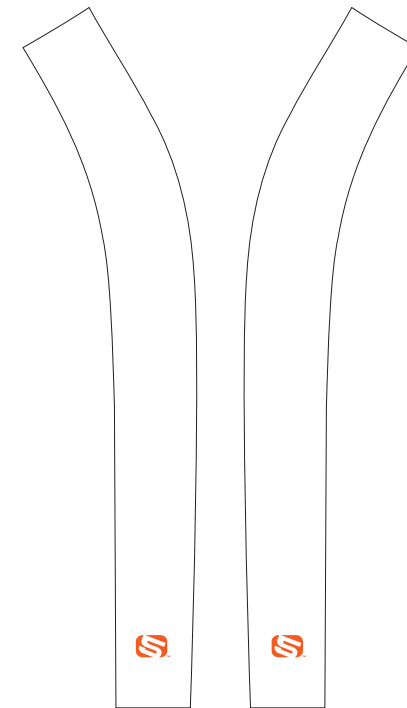
www.zerofive.com.au

design@zerofive.com.au

**ZERO FIVE**  
CUSTOM SPORTSWEAR



REAR PANEL



LEFT SIDE PANEL

RIGHT SIDE PANEL

PRE-DYED  
LYCRA:



PANTONE®  
Black C



PANTONE®  
Red 186C



PANTONE®  
Dark Navy 2767 C



PANTONE®  
Navy Blue 2735 C



PANTONE®  
Light Blue 285 C



PANTONE®  
Cool Grey 11C



PANTONE®  
Green 340 C

## COLORS USED:



## FLATLOCK COLOR OPTIONS:



- This template can be edited with vector graphic software programs. Adobe Illustrator CS5 is recommended.
- All logos must be provided in vector format and all fonts must be converted into outline.
- The color on-screen may vary from the finished product. To confirm the color please refer to PANTONE® MATCHING SYSTEM FORMULA GUIDE Solid Coated.
- We will try the best to match the PANTONE® colors when printing, but exact matching cannot be guaranteed, due to variation in temperature, humidity and materials.