

TAA03A Short Sleeve Cycling Jersey

Corsa SET-IN Sleeve

CUSTOMER: _____

VERSION: 1

DESIGN REQUEST NUMBER: _____

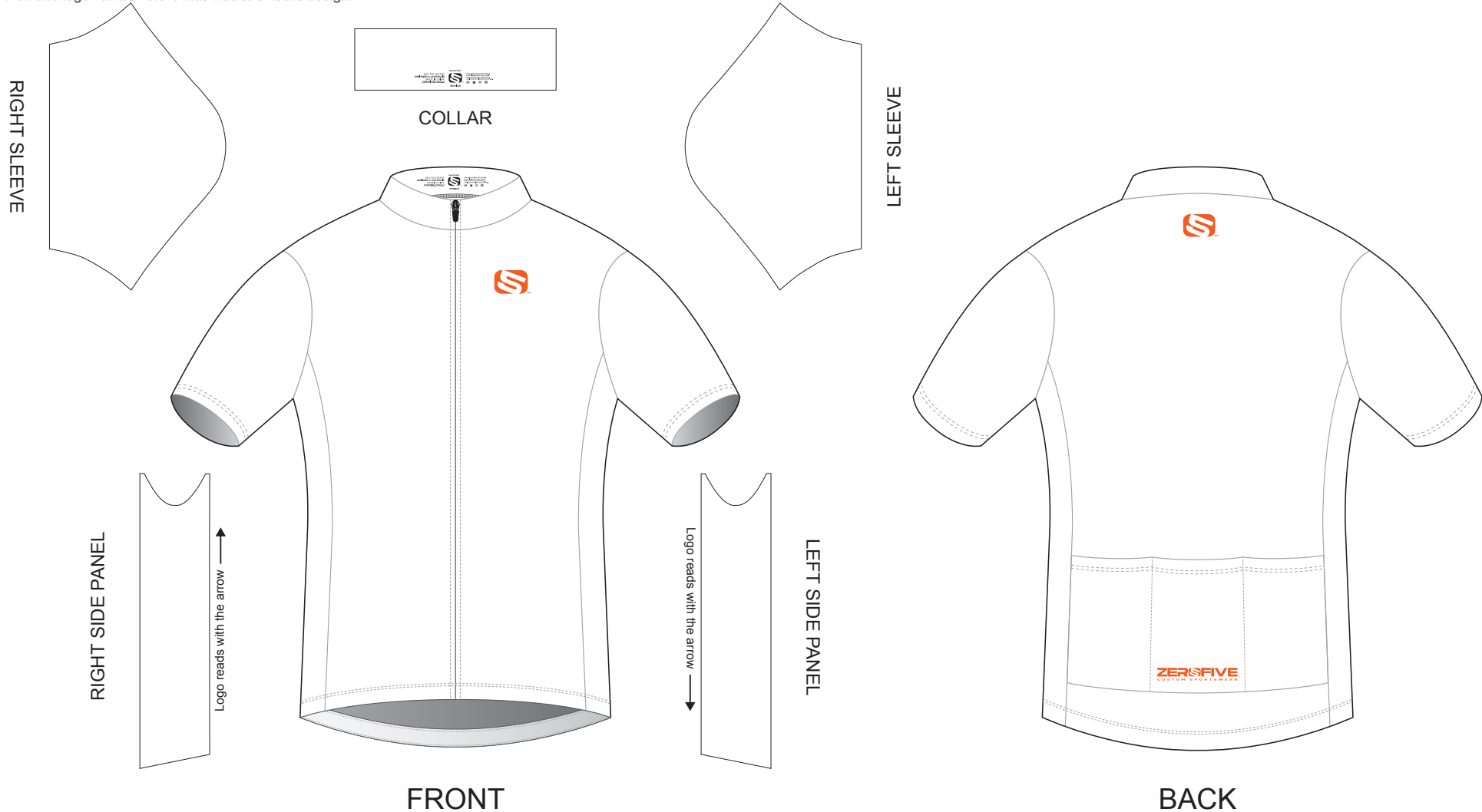
DATE: 00 / 00 / 2014

www.zerofive.com.au

design@zerofive.com.au



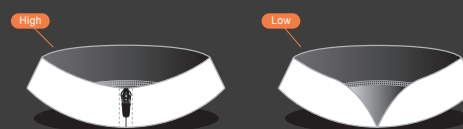
Please note that ZEROFIVE Icon must appear on the upper chest area (left or right) and on the center of upper back for all the tops. The ZEROFIVE wordmark logo must appear on the lower middle pocket. The 05 Icon and logo can be colour matched to suit the design.



COLORS USED:



COLLAR OPTIONS:



- This template can be edited with vector graphic software programs. Adobe Illustrator CS5 is recommended.
- All logos must be provided in vector format and all fonts must be converted into outline.
- The color on-screen may vary from the finished product. To confirm the color please refer to PANTONE® MATCHING SYSTEM FORMULA GUIDE Solid Coated.
- We will try the best to match the PANTONE® colors when printing, but exact matching cannot be guaranteed, due to variation in temperature, humidity and materials.

TAA07AW Short Sleeve Cycling Jersey

Corsa WSP SET-IN Sleeve, WOMEN

CUSTOMER: _____

VERSION: 1

DESIGN REQUEST NUMBER: _____

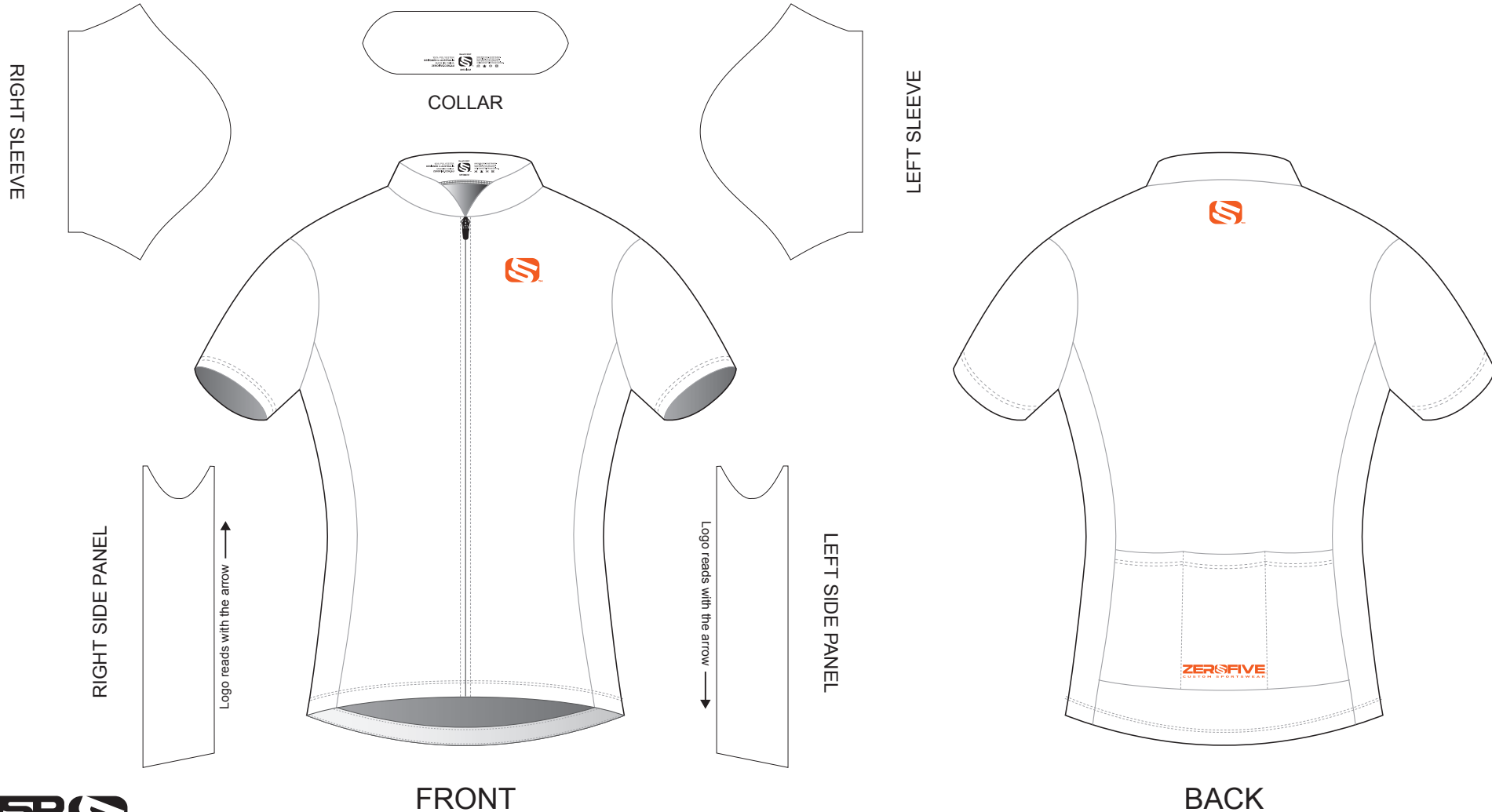
DATE: 00 / 00 / 2014

www.zerofive.com.au

design@zerofive.com.au



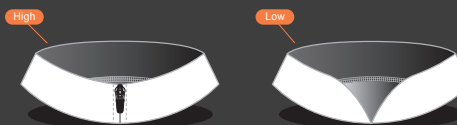
Please note that ZEROFIVE Icon must appear on the upper chest area (left or right) and on the center of upper back for all the tops. The ZEROFIVE wordmark logo must appear on the lower middle pocket. The 05 Icon and logo can be colour matched to suit the design.



COLORS USED:



COLLAR OPTIONS:



- This template can be edited with vector graphic software programs. Adobe Illustrator CS5 is recommended.
- All logos must be provided in vector format and all fonts must be converted into outline.
- The color on-screen may vary from the finished product. To confirm the color please refer to PANTONE[®] MATCHING SYSTEM FORMULA GUIDE Solid Coated.
- We will try the best to match the PANTONE[®] colors when printing, but exact matching cannot be guaranteed, due to variation in temperature, humidity and materials.