

TAH09A 1/2 Cycling Bib Shorts

Corsa Grupetto C+2 Style, with Silicon Gripper

CUSTOMER: _____

VERSION: 1

DESIGN REQUEST NUMBER: _____

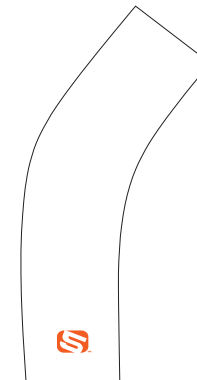
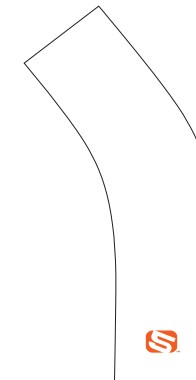
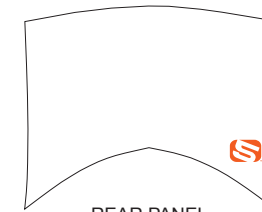
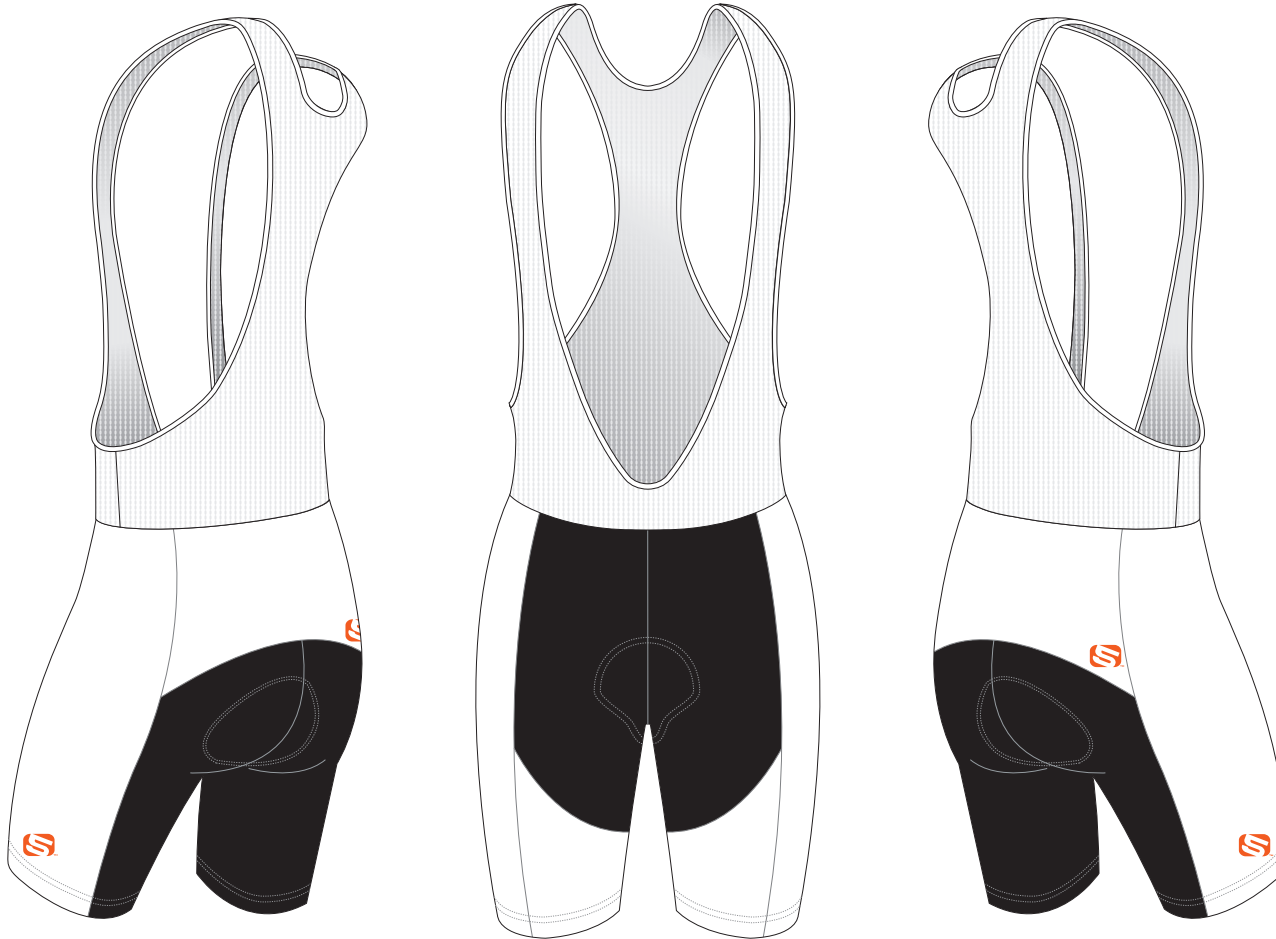
DATE: 00 / 00 / 2014

www.zerofive.com.au

design@zerofive.com.au

ZERO FIVE
CUSTOM SPORTSWEAR

Please note that Zerofive logo must appear on the side panels and on the back panel for all the bottoms.



PRE-DYED
LYCRA:



PANTONE®
Black C



PANTONE®
Red 186C



PANTONE®
Dark Navy 2767 C



PANTONE®
Navy Blue 2738 C



PANTONE®
Light Blue 285 C



PANTONE®
Cool Grey 11C



PANTONE®
Green 340 C

COLORS USED:



FLATLOCK COLOR OPTIONS:



* This template can be edited with vector graphic software programs. Adobe Illustrator CS5 is recommended.

* All logos must be provided in vector format and all fonts must be converted into outline.

* The color on-screen may vary from the finished product. To confirm the color please refer to PANTONE® MATCHING SYSTEM FORMULA GUIDE Solid Coated.

* We will try the best to match the PANTONE® colors when printing, but exact matching cannot be guaranteed, due to variation in temperature, humidity and materials.