

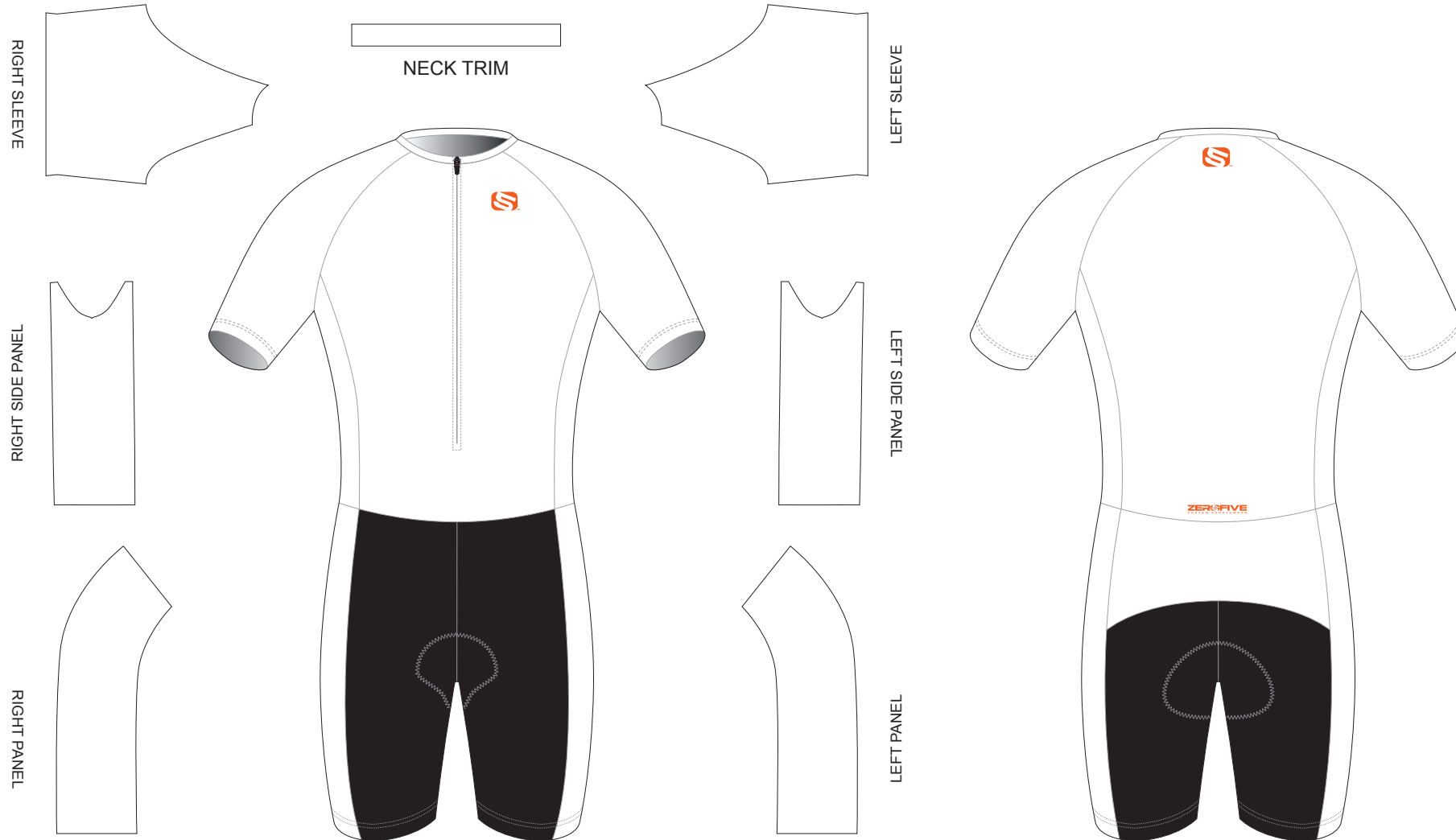
TAK05A Short Sleeve Cycling Speed Skinsuit

Time Attack Style, without Collar, with Silicon Gripper

CUSTOMER: _____ VERSION: _____
 DESIGN REQUEST NUMBER: _____ DATE: _____
 www.zerofive.com.au design@zerofive.com.au



Please note that ZEROFIVE Icon must appear on the upper chest area (left or right) and on the center of upper back for all the tops. The ZEROFIVE wordmark logo must appear on the lower middle pocket. The 05 Icon and logo can be colour matched to suit the design.



PRE-DYED LYCRA:

- PANTONE® Black C
- PANTONE® Red 186C
- PANTONE® Dark Navy 2767 C
- PANTONE® Navy Blue 2738 C
- PANTONE® Light Blue 285 C
- PANTONE® Cool Gray 11C
- PANTONE® Green 340 C

COLORS USED:



OTHER OPTIONS FOR LEG HEM:

FLATLOCK COLOR OPTIONS:



* This template can be edited with vector graphic software programs. Adobe Illustrator CS5 is recommended.
 * All logos must be provided in vector format and all fonts must be converted into outline.
 * The color on-screen may vary from the finished product. To confirm the color please refer to PANTONE® MATCHING SYSTEM FORMULA GUIDE Solid Coated.
 * We will try the best to match the PANTONE® colors when printing, but exact matching cannot be guaranteed, due to variation in temperature, humidity and materials.

TAL05A Long Sleeve Cycling Speed Skinsuit

Time Attack 1.0 Style, without Collar, with Silicon Gripper

CUSTOMER: _____

VERSION: _____

DESIGN REQUEST NUMBER: _____

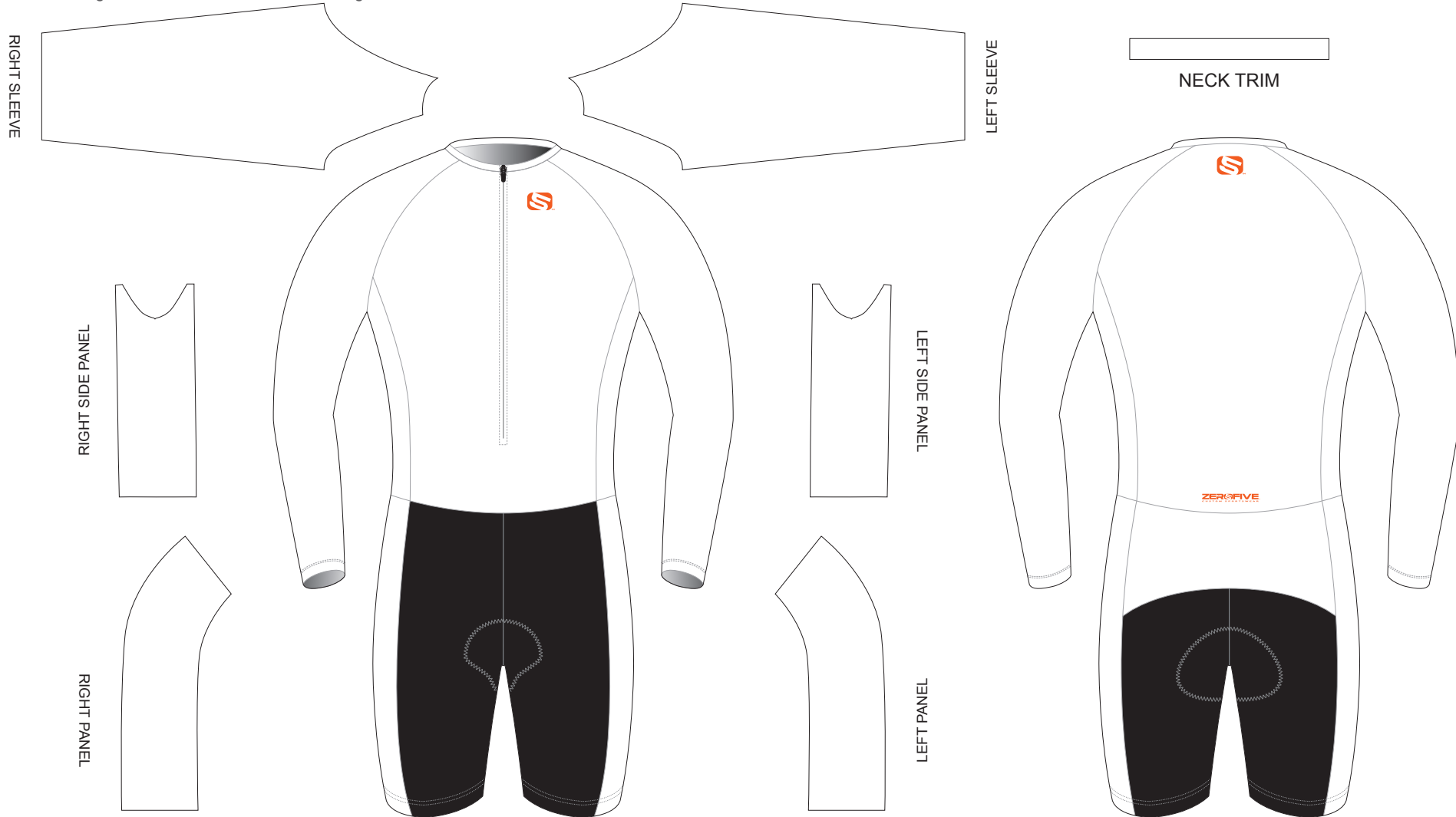
DATE: _____

www.zerofive.com.au

design@zerofive.com.au



Please note that ZEROFIVE Icon must appear on the upper chest area (left or right) and on the center of upper back for all the tops. The ZEROFIVE wordmark logo must appear on the lower middle pocket. The 05 Icon and logo can be colour matched to suit the design.



PRE-DYED LYCRA:



PANTONE® Black C



PANTONE® Red 186C



PANTONE® Dark Navy 2767 C



PANTONE® Navy Blue 2738 C



PANTONE® Light Blue 285 C



PANTONE® Cool Grey 11C



PANTONE® Green 340 C

COLORS USED:



FLATLOCK COLOR OPTIONS:



- This template can be edited with vector graphic software programs. Adobe Illustrator CS5 is recommended.
- All logos must be provided in vector format and all fonts must be converted into outline.
- The color on-screen may vary from the finished product. To confirm the color please refer to PANTONE® MATCHING SYSTEM FORMULA GUIDE Solid Coated.
- We will try the best to match the PANTONE® colors when printing, but exact matching cannot be guaranteed, due to variation in temperature, humidity and materials.

TAL05A Long Sleeve Cycling Speed Skinsuit

Time Attack 1.0 Style, without Collar, with Silicon Gripper

CUSTOMER: _____

VERSION: _____

DESIGN REQUEST NUMBER: _____

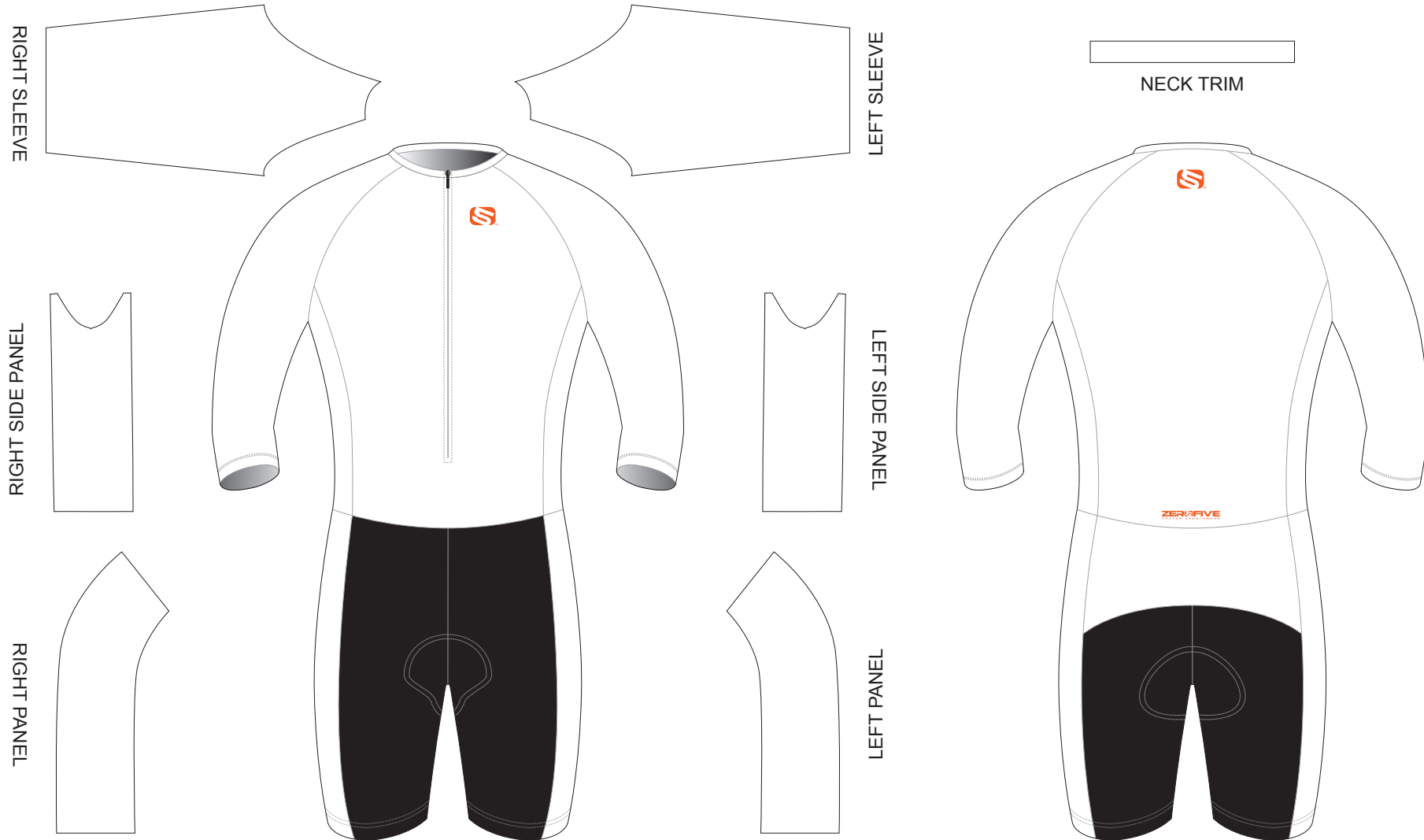
DATE: _____

www.zerofive.com.au

design@zerofive.com.au



Please note that ZEROFIVE Icon must appear on the upper chest area (left or right) and on the center of upper back for all the tops. The ZEROFIVE wordmark logo must appear on the lower middle pocket. The 05 Icon and logo can be colour matched to suit the design.



PRE-DYED LYCRA:



PANTONE® Black C



PANTONE® Red 186C



PANTONE® Dark Navy 2767 C



PANTONE® Navy Blue 2736 C



PANTONE® Light Blue 285 C



PANTONE® Cool Gray 11C



PANTONE® Green 340 C

COLORS USED:



FLATLOCK COLOR OPTIONS:



* This template can be edited with vector graphic software programs. Adobe Illustrator CS5 is recommended.

* All logos must be provided in vector format and all fonts must be converted into outline.

* The color on-screen may vary from the finished product. To confirm the color please refer to PANTONE® MATCHING SYSTEM FORMULA GUIDE Solid Coated.

* We will try the best to match the PANTONE® colors when printing, but exact matching cannot be guaranteed, due to variation in temperature, humidity and materials.